

10 Telling Tales



From the beginning of civilisation, we have told stories for entertainment. The oldest tales such as **Cinderella**, **snow white** and **sleeping Beauty** belong to ancient tradition. The French writer Charles Perrault and the German brothers Grimm

adapted them to become the **fairytale**s we know today. All of the tales contain traditional figures of good and evil such as the maiden, the prince, the witch and the ogre. These characters frighten us, shock us and please us at the same time. Disney has produced beautiful films of these stories which **soften** the elements of fear. They **even** have an ogre as a hero in "Shrek"!



Cinderella = Cenerentola
Snow White = Biancaneve
Sleeping Beauty =
 La bella addormentata nel bosco
belong to = appartengono
fairytales = fiabe
soften = addolciscono
even = perfino

glossary

Director Tim Burton has made some very successful story-telling films for example "Batman" (1989), "Edward Scissorhands" (1990), "The Nightmare before Christmas" (1993), "Planet of the Apes" (2001), "Corpse Bride" (2005) and "Charlie and the Chocolate Factory" (2005). In his early career, he worked as an animator at Disney but they didn't like his drawings very much! He believes that the dark, scary side of fairytales give them their fascination. He says adults try to protect children from dark themes because "they don't remember what it's like to be a kid - kids love to be scared!"



Tim Burton has worked with Johnny Depp on six of his thirteen films, including "Sweeney Todd - The Demon Barber of Fleet Street" (2008) and, more recently, "Alice in Wonderland" (2010).



1 Read the list of characters and write the Italian equivalents. Which are good and which are bad? Mark good (G) or bad (B) next to each word.

- 1 fairy =
- 2 ogre =
- 3 prince =
- 4 dwarf =
- 5 knight =
- 6 stepmother =
- 7 witch =
- 8 maiden =
- 9 dragon =

G	B
G	B
G	B
G	B
G	B
G	B
G	B
G	B
G	B



2 Do the "Tim Burton Film Quiz" then check your score.



Tim Burton Film Quiz

- 1 Which film has a sympathetic character called Ari leading a group of rebels against a gorilla army?
 A "Planet of the Apes".
 B "Batman Returns".
 C "Alice in Wonderland".

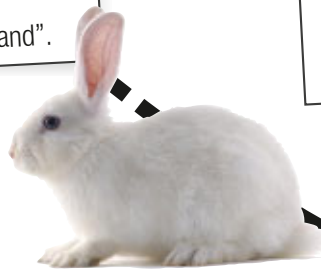


- 2 In which film is the hero very clever at cutting things?
 A "Sweeney Todd".
 B "Edward Scissorhands".
 C "Big Fish".

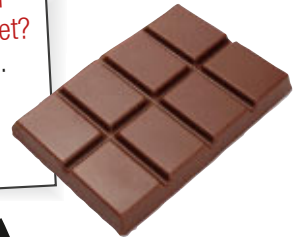


- 3 Which hero has the Joker as his enemy?
 A "Sleepy Hollow".
 B "Mars attacks!".
 C "Batman".

- 6 Which film has a heroine who follows a white rabbit?
 A "Edward Scissorhands".
 B "Sleepy Hollow".
 C "Alice in Wonderland".



- 4 In which film do children try to win a Golden Ticket?
 A "Alice in Wonderland".
 B "Charlie and the Chocolate Factory".
 C "Mars Attacks!".



- 5 In which film does Johnny Depp's character kill his customers?
 A "Big Fish".
 B "Sweeney Todd".
 C "Ed Wood".



Answers

1 A, 2 B, 3 C, 4 B, 5 B, 6 C

3 Which is your favourite fantasy film? Prepare a short presentation about it for your classmates. Think about these things.



- Who are the main characters?
- Which characters are good and which characters are bad?
- Where does the story happen?
- Are there moments of suspense or horror?
- Has the story got a happy ending?

English Humour

Why was six scared of seven?

Because seven, eight (ate) nine!

